

SEPTEMBER 2017 LISTING REPORT

OFFICE/RETAIL



**903 W Ann Arbor Rd
Plymouth**

\$1800/mo, NN

1200 SF

1200 SF space with overhead door suitable for auto garage, retail or office. Expense charges \$337 per month.

[See Details](#)

**Bela Sipos, CCIM
734.669.5813**

OFFICE/RETAIL



**320 W Grand River
Brighton**

\$3000/mo, NN

1246 SF

High profile retail space on Grand River in downtown Brighton. Perfect for small office use or retail. Taxes and insurance \$395 per month.

[See Details](#)

**Bela Sipos, CCIM
734.669.5813**

OFFICE/RETAIL



**601 Woodland Dr E
Saline**

\$12/SF, gross

1850 SF

Modestly priced office space in UAW Building at the corner of Woodland and Maple in Saline. 5-6 dedicated offices and a large reception/bullpen area. Plenty of parking and the possibility of signage. *This is a gross lease, landlord pays all expenses.*

[See Details](#)

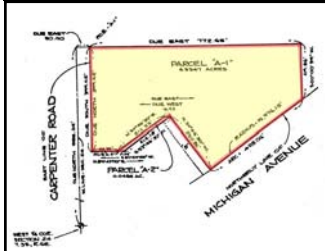
**Bela Sipos, CCIM
734.669.5813**

**←
NEW
LISTINGS**

**CURRENT
SALE
LISTINGS**



VACANT LAND



**0 Carpenter Rd / W Michigan
Pittsfield Township**

\$725,000

6.3 +/- Acres

Prime location—Many options for commercial development exist for this high traffic location. 6.3 +/- acre vacant parcel in Pittsfield Township.

[See Details](#)

**Amy Freundl
734.669.5904**

SPECIAL PURPOSE



**305 W Elizabeth
Stockbridge**

\$80,000

70,000 SF

Unique opportunity to own a wonderful historic school building in the village of Stockbridge. Building may need some renovation, but could be a good Assisted Living Facility, day care, multi-tenant space. A rare offering at an exceptional price.

[See Details](#)

**Amy Freundl
734.669.5904**

VACANT LAND



**0 M-52 & Hogan
Manchester**

\$827,000

31.8 Acres

2 Parcels for Commercial and/or Industrial use. Adjacent 24 acre parcel zoned R1-A also available.

[See Details](#)

**Bela Sipos, CCIM
734.669.5813**

OFFICE/RETAIL



**2610 E Michigan
Jackson**

\$119,000

980 SF

Very well maintained office space with plenty of paved parking. Great location, good visibility, close to the hospital and easy access to 94 & 127. Reception area, 2 private offices and a conference room. Perfect for doctor's office, lawyer, accountant, real estate firm.

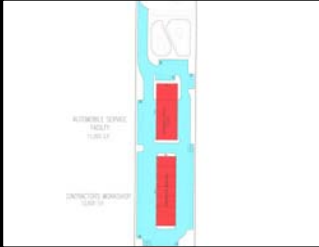
[See Details](#)

**Amy Freundl
734.669.5904**

SALE LISTINGS CONTINUED

PAGE 2

VACANT LAND



**41775 Michigan Ave
Canton**

\$300,000

3.94 Acres

Sale or Build-To-Suit on land behind Hertz & Victory Lane. Approx 2-1/2 buildable acres. 5,000-20,000 SF for possible auto use or warehouse/storage. Utilities to the site.

[See Details](#)

**Bela Sipos, CCIM
734.669.5813**

OFFICE/RETAIL



**2217 Packard—Unit 15
Ann Arbor**

\$60,000

1052 SF

Affordable office or special purpose condo. 2 full bathrooms with showers, wide open space for activities, atrium windows and 2 private offices. Attractive floor plan for many owner/user options. Convenient location and you can't beat the price!

[See Details](#)

**Amy Freundl
734.669.5904**

INDUSTRIAL



**175 Rawsonville
Belleville**

\$850,000

34446 SF, 9.65 Acres

9.65 Acre parcel with 34,440 SF, M-1 zoned building. Building is fully leased and in very good condition. Two 2-ton cranes, 30 ± parking spaces, 1 truck well, 18-20' ceilings. Convenient to I-94. Possible split per township approval.

[See Details](#)

**Amy Freundl
734.669.5904**

VACANT LAND



**0 Sooten Rd
Manchester**

\$240,500

24.05 Acres

Single Family Residential property in the Village of Manchester. Water, sewer, and utilities at the corner of Hogan and Sooten Rds. Adjacent 32 acre parcel zoned also available.

[See Details](#)

**Bela Sipos, CCIM
734.669.5813**

OFFICE/RETAIL



**578 Sumpter
Belleville**

\$129,000

2268 SF

Solid building with private offices and shop spaces. 12 ft OH door, 5 ton crane & 3-phase air compressor. Current use is for electric contractor who covers all of SE Michigan/Northern Ohio. Proximity to I-94 would make it an ideal location for another regional business.

[See Details](#)

**Amy Freundl
734.669.5904**

VACANT LAND



**0 Textile
Pittsfield Twp**

\$260,000

3.01 Acres

3.01 Acre site with 250 front feet on Textile. Ann Arbor address. Utilities at the road, off-site detention. Ideal for Office Building. PUD zoning allows for many potential uses.

[See Details](#)

**Bela Sipos, CCIM
734.669.5813**

LEASE LISTINGS

PAGE 3

OFFICE/RETAIL



**511 W Cross
Ypsilanti**

\$8/SF, NNN

2500 SF

Partially remodeled street level suite near EMU's campus. Suite includes access to private courtyard for additional space. Coffee shop? Yoga Studio? Independent Bookstore? Bring your ideas!

[See Details](#)

**Amy Freundl
734.669.5904**

OFFICE/RETAIL



**2200 Green—Ste G
Ann Arbor**

\$24/SF, Gross

895 SF

Quality building on the Northeast side of Ann Arbor. Only one suite left at 895 SF. Plenty of parking and easy access from US-23 or M-14.

[See Details](#)

**Bela Sipos, CCIM
734.669.5813**

OFFICE/RETAIL



**962 E Michigan Ave
Saline**

\$14/SF, NNN

1240 SF

Highly desirable retail space at The Oaks Retail Center located in the north retail strip. CAM charges approx. \$4.30/SF.

[See Details](#)

**Bela Sipos, CCIM
734.669.5813**

OFFICE/RETAIL



**1020 E Mich Ave-Ste D
Saline**

\$15/SF, NNN

1072 SF

Nice office space in Saline. Professional Office Building with signage on the building. Excellent Location! 1072 SF, available August 1st.

[See Details](#)

**Bela Sipos, CCIM
734.669.5813**

OFFICE/RETAIL



**2236 Packard
Ypsilanti**

\$8/SF, modified gross

3800 SF

Great building with high visibility. Entire ground level east/west units available for lease. Finished space with offices and reception area. East side unit has a full bath with shower. Ample surface parking. Lots of possibilities!

[See Details](#)

**Amy Freundl
734.669.5904**

OFFICE/RETAIL



**2275 W Stadium
Ann Arbor**

\$35-\$40/SF, NNN

1380 - 9100 SF

New Office/Retail building being constructed on W. Stadium close to Liberty. Ground floor spaces range from 1380-9100 SF, there will be ample parking. Very high traffic area. Expected completion late spring 2018.

[See Details](#)

**Bela Sipos, CCIM
734.669.5813**

OFFICE/RETAIL



**625 State Circle
Ann Arbor**

\$1500/mo, gross

1442 SF

Excellent location! Immediate access from I-94 and just a few minutes to downtown Ann Arbor. Professional office with private offices, open area and kitchen. Gross lease.

[See Details](#)

**Amy Freundl
734.669.5904**